

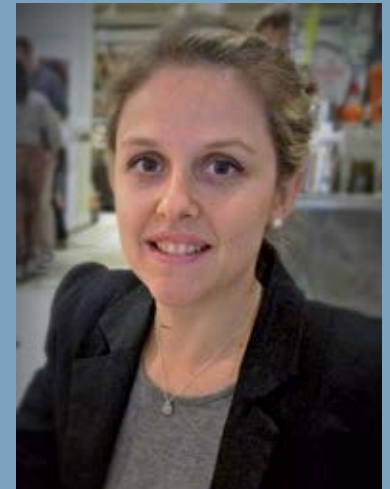
# OSTROM WORKSHOP RESEARCH SERIES

## Marcela da S. Feital Benedetti

*Department of Sociology, Universidade Estadual de  
Campinas, São Paulo, Brazil*

*Ostrom Workshop Visiting Scholar*

“Climate Change and Human Displacement:  
A Sociological Contribution to Understand  
Transitional Societies”



**Wednesday, October 25, 2017**

12:00 – 1:00 p.m.

Ostrom Workshop, 513 N. Park

Human displacement is one of the most serious consequences of climate change. Some of its impacts (e.g., drought, desertification, groundwater and soil salinization, rising sea level) are becoming more intense and imposing migration to some social groups and nations, whose fate is likely losing their land, their feelings of belonging, and their culture. Having a native community in Alaska as a case study, this research discussion aims to problematize in which extent the global knowledge of climate change and the global categories of environmental or climate refugees are considered meaningful, empowering, and are mobilized (or not) by the social groups attempting to influence the decision making about their own future. To do so, the conceptual-analytical framework of arena has been adopted as an interesting tool to analyze this puzzle. And as part of the research results, this puzzle has been reframing part of this theoretical-methodological approach.



**Marcela's** research focuses on climate change and human displacement, in particular on the decision-making arena about cases of slow-on-set impacts of global warming. Her sociological work adopts the conceptual-analytical framework of arena, which has been very suitable to analyze decision-making processes so far. This research is supported by CAPES (Coordenação de Aperfeiçoamento de Pessoal de Nível Superior) in Brazil ([website](#)).

Presentations are open to the public (see our website for papers). You are welcome to bring your lunch. For questions, contact Allison Sturgeon ([sturgeon@iu.edu](mailto:sturgeon@iu.edu); 812/855-3151).